

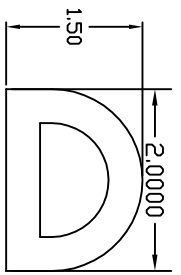
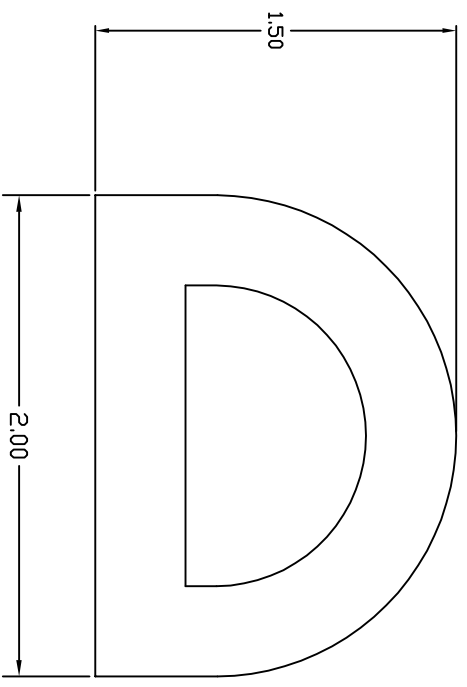
4

3

2

1

REVISIONS				
ZONE	REV	DESCRIPTION	DATE	APPROVED
S.D.	1	Release For Production	10/26/07	




Reference
Tolerance: 5% commercial

4

3

2

1

 DRI Dynamic Rubber, Inc. 1748 Elmhurst Road Elk Grove Village, IL 60007 Tel: 847-750-0241 Fax: 847-750-0234		Part Number: DR-29	
CONFIDENTIAL: This document contains information which is proprietary to DRI, and should be protected accordingly.			
SIZE	FORM NO.	DWG NO.	REV
SCALE		1 OF 1	1 OF 1
SHEET		1 OF 1	

A

B

C

D

A

B

C

D